

# ATLAS HISTORYCZNY MIAST POLSKICH

Redakcja naukowa  
ROMAN CZAJA

## TOM IV ŚLĄSK

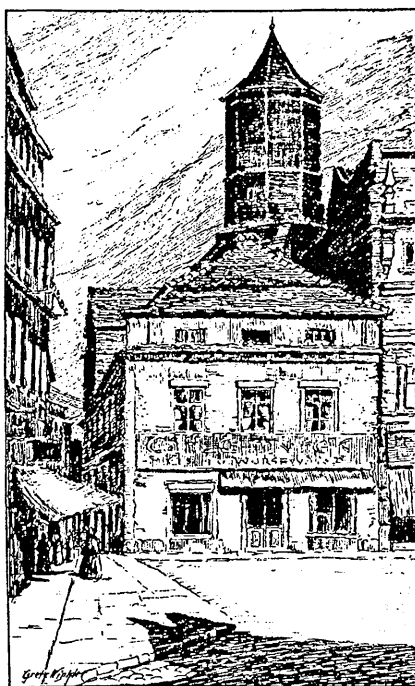
Redakcja naukowa  
MARTA MŁYNARSKA-KALETYNOWA

## ZESZYT 15 GLIWICE

Redakcja naukowa  
ANTONI BARCIAK, MARCIN SEPIAŁ

Współpraca redakcyjna  
RAFAŁ EYSYMONTT, MARTA MŁYNARSKA-KALETYNOWA

Opracowali  
ANTONI BARCIAK, PIOTR BOROŃ, ZDZISŁAW JEDYNAK, BOGUSŁAW MAŁUSECKI,  
JACEK PIERZAK, MARCIN SEPIAŁ, BARBARA SZCZYPKA-GWIAZDA



WINKLER, AM RING IN GLEIWITZ

Wybór i opracowanie kartografii historycznej: Marcin Sepiał  
Opracowanie redakcyjne: Klaudia Drózdź, Lucyna Jachym  
Opracowanie typograficzne: Jarosław Połamarczuk, Elżbieta Klimek  
Tłumaczenie na język angielski: Jacek Słupski  
Prace kartograficzne: Marcin Sepiał  
Prace techniczne: Lidia Nowacka  
Koordynacja prac wydawniczych: Jadwiga Dunaj

Recenzenci: Bogusław Krasnowolski, Zdzisław Noga

Wydawca: Instytut Archeologii i Etnologii PAN  
Ośrodek Badań nad Kulturą Późnego Antyku i Wczesnego Średniowiecza  
50-118 Wrocław, ul. Więzienna 6

Prace przygotowawcze wykonane w ramach grantu  
KBN nr 0599/13/H03/2008/35.  
Wydawnictwo finansowane w ramach programu  
Ministra Nauki i Szkolnictwa Wyższego pod nazwą  
„Narodowy Program Rozwoju Humanistyki” w latach 2014–2017.  
Projekt nr 11H 13 0215 82.



NARODOWY PROGRAM  
ROZWOJU HUMANISTYKI

ISBN 978-83-63760-60-1  
© Autorzy, Redaktorzy i Wydawca 2015  
Wydrukowano w Drukarni Księży Werbistów  
ul. Klasztorna 4, Górna Grupa, PL 86-134 Dragacz



WROCLAW 2015

# THE HISTORICAL ATLAS OF POLISH TOWNS

Edited by  
ROMAN CZAJA

## VOLUME IV SILESIA

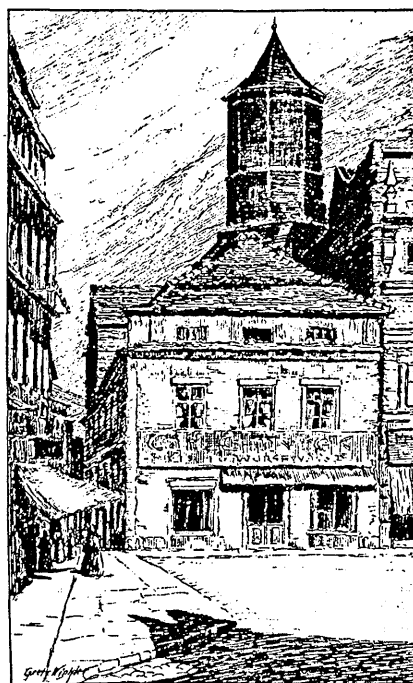
Edited by  
MARTA MŁYNARSKA-KALETYNOWA

## BOOK 15 GLIWICE

Edited by  
ANTONI BARCIAK, MARCIN SEPIAŁ

Editorial cooperation  
RAFAŁ EYSYMONTT, MARTA MŁYNARSKA-KALETYNOWA

Authors  
ANTONI BARCIAK, PIOTR BOROŃ, ZDZISŁAW JEDYNAK, BOGUSŁAW MAŁUSECKI,  
JACEK PIERZAK, MARCIN SEPIAŁ, BARBARA SZCZYPKA-GWIAZDA



WINKLER, AM RING IN GLEIWITZ

Compilation and elaboration of historical cartography : Marcin Sepiał  
Editing: Klaudia Drózdź, Lucyna Jachym  
Typographic editing: Jarosław Połamarczuk, Elżbieta Klimek  
Translation into English: Jacek Słupski  
Cartographic works: Marcin Sepiał  
Technical works: Lidia Nowacka  
Coordination works: Jadwiga Dunaj

Reviewers: Bogusław Krasnowolski, Zdzisław Noga

Publisher: Instytut Archeologii i Etnologii PAN  
Ośrodek Badań nad Kulturą Późnego Antyku i Wczesnego Średniowiecza  
50-118 Wrocław, ul. Więzienna 6

Preparatory work carried out as a part of a State Committee  
for Scientific Research grant number 0599/13/H03/2008/35.  
Publication founded by the Ministry of Science and Higher Education  
as a part of a „National Program of Development of Humanities”  
project for the years 2014-2017.  
Project number 11H 13 0215 82.



NARODOWY PROGRAM  
ROZWOJU HUMANISTYKI

ISBN 978-83-63760-60-1

© Authors, Editors and Publisher 2015  
Printed in: Drukarnia Księży Werbistów  
ul. Klasztorna 4, Górna Grupa, PL 86-134 Dragacz



WROCLAW 2015

# CARTOGRAPHY AND ILLUSTRATIONS

Illustration on the title page: Gliwice. The south-west corner of Rynek Square. Postcard publ. by Schönwolff, Gliwice, before 1895, acc. to a drawing by G. Winkler, Museum in Gliwice MG/F/5114.

## DESCRIPTIVE SECTION

1. The distances between Gliwice and other towns and cities in the region. (Fig. M. Sepiał).
2. A basement plan for the building at 5, Rynek Square, examined by Halina Wojciechowska and Jacek Radziejewicz-Winnicki in 1978.
3. Biała (Bytomska) Gate in 1846. A drawing by Alexander von Minutoli. PAU and PAN Library, Cracow, Section of Drawings and Prints RT-13/200.
4. A reliquary found during archaeological surveys in the churchyard of the Church of All Saints. Photo: Museum in Gliwice.
5. A church at Sobiszowice in the 18th c. F.B. Werner, *Silesia in Compendio seu Topografia*, 1763, BUWr Rkps IV F 113 b, Vol. 3, p. 335.
6. Urbarium of Gliwice 1589, ÖSA Wien, Finanzarchiv Kt 147 p. 1.
7. The territorial reach and the chronology of incorporation into Gliwice of lands adjoining the city, 1929, ZK 337/1.
8. Plan of expansion of the town of Gliwice as a seat of a regency district (Ilgner, 1801), after: Oswald Völkel, *Wie Gliwitz beinahe Landeshauptstadt wäre*, Oberschlesische Volksstimme, No. 301/53 (1 Nov 1927).
9. The population of Gliwice in the years 1750-1955.
10. The population of Gliwice in the years 1960-2007.
11. An analysis of the location of a new port on the canal in Gliwice. An appendix to the expert opinion of Dr. Eng. Blum of 12 August 1926, ZK Gz 15 (temp. call No.).
12. Gliwice as a transport junction of an industrial region. A design study dated 30 September 1940, ZK Gz 8 [temp. call No.].
13. 'Haus Oberschlesien', design: Arch. B.D.A. Gaze & Boettcher, Wrocław, 1923-1928.
14. The E. Weichmann textile house, design: E. Mendelsonn, 1921-1922, p. 138.
15. Gliwice, an aerial photograph, 1922.
16. Housing estate 'Nord', Tarnowska Street (Tarnowitzer Strasse), 1920-1921.
17. Bytom-Zabrze-Gliwice conurbation plan, 1926.
18. Design of city axis Kattowitzer Allee, Platz der Republik, Markgrafenstrasse, Reichspräsidentenplatz (Akademicka Street, Krakowski Square, Strzody Street, Wyszyńskiego Street), design: K. Schabik, 1928.
19. A general city's development plan, 1828.
20. State Railway Station, erected in 1925 to a design by Hess and Hettler.
21. J.v. Eichendorff Higher Secondary School, design: K. Schabik.

## CARTOGRAPHIC SECTION

1. Gliwice. A cadastral map from 1884. Scale 1:2,500. Prepared by M. Sepiał.
2. Gliwice. The city's spatial development and the functions of its major facilities from the 13th c. to the 20th c. Scale 1:15,000. Prepared by B. Malusecki, M. Sepiał. Cartographic materials prepared by M. Sepiał.
3. Gliwice. The functions of the most important facilities of the historic centre. Scale 1:2,500. Prepared by B. Malusecki, M. Sepiał. Cartographic materials prepared by M. Sepiał.
4. Gliwice. Human settlement near Gliwice from the 13th c. to the 16th c. Scale 1:50,000. Prepared by P. Boroń, A. Barciak, M. Sepiał. Cartographic materials prepared by M. Sepiał.
5. Gliwice. Original parcellation against a cadastral map from 1884, taking account of findings of archaeological surveys. Scale 1:2,000. Prepared by P. Boroń, M. Sepiał. Cartographic materials prepared by M. Sepiał.
6. *Gliwitz*, Ch.F. Wrede, *Krieges Karte von Schlesien*, Glatz 1749, Ab. 2, (title page), original scale approx. 1:13,500, colour drawing 10 x 9.5 cm; Berlin SBB III C N 15060-2.
7. *Gliwitz*, Drawing I. v. Furtenbach, ca. 1763, original scale approx. 1:10,000, colour drawing 18 x 13 cm; Berlin SBB III C Kart X 25122.
8. *Gliwitz in Prospect mit umliegender gegende*, F.B. Werner, *Silesia in Compendio seu Topographia* ..., approx. 1763, p. 342-343, colour drawing 39 x 32.2 cm; BUWr. rkps IV F 113b vol. 1.
9. *Kabinettskarte preussischen Provinzen*, Blatt 219, Fr.C. v. Schmetau, F.W. v. Schulenburg, 1767-1787, original scale approx. 1:50,000, colour drawing 90 x 56 cm; Berlin SBB II C Kart L 5420-7.
10. *Charte des Beuthener Wassers vom Anfang oberhalb der Stadt Beuthen bis ein Einfall des Chlodnitzer Flusses bey der Stad Gleiwitz* (a fragment), Inspector Geschke drawn by Runschke 1788-1791, original scale approx. 1:10,000, colour drawing 202 x 25 cm; APGliwice ZK 338.
11. *Plan der Klodnitzer Flusse von der Stadt Ujest und Niestrowitz Grenze über Goier, Stodolcker, Widzirower, Lonauer, Laskarowcker, Plawniowitzer, Poinchowitzer, Niewiescher, Bytziner, Dzierschauer, Rzetzitzer, Ellgotter, Labanter, Przischowcker, Nepaschuetzer, Alt-Gleiwitz, Petersdorf und Stadt Gleiwitz Territorium* (a fragment), drawn by Kosog conducteur 1788/1789, original scale approx. 1:10,000, colour drawing ca. 200 x 25 cm; AP Opole RO III/51.
12. *Situations Plan der Stadt Gleiwitz mit ihren Vorstädten*, drawn by Promnitz 1812, copied by Julius Augustini 1828, original scale approx. 1:7,400, colour drawing 42 x 35.5 cm; AP Opole RO IX/11.
13. *Charte der Feldmark Petersdorf nebst denen dazu gehörigen Grundstücken*, drawn by Plascude 1811, copy by Schüler 1820, original scale approx. 1:3,000, colour drawing 87 x 82 cm; AP Gliwice ZK 581.

14. *Plan und Profil-Zeichnung des Klodnitz Flusses und den daran belegenden, vom Frisco erkauften drey sogenannten Bück-, Gross- und Steiner. Mühle, nebst dazugehörigen Grundstücken, dasgleichen von dem schiffbaren Klodnitz-Canal von der Königl. Eisengiesserey bez Gleiwitz, bis Schleusse XV unterhalt Laband* (a fragment), drawn by Boehme, 1828, original scale approx. 1:5,000, colour drawing ca. 200 x 65.5 cm; Berlin GSA C 50529.

15. *Original Karte eines Theiles der Beuthener Vorstadt und ihrer Umgebung zu Gleiwitz*, prepared by Kolley 1850, original scale approx. 1:1,000, colour drawing 80 x 206 cm; AP Gliwice ZK 350.

16. *Situations Plan Stadt Gleiwitz. No 1. Die innere Stadt die Weisse Vorstadt und die Beuthener Vorstadt bis zu die Klodnitz*, prepared by Sternitzki 1853, original scale approx. 1:1,000, colour drawing 111 x 111 cm; AP Gliwice ZK 348.

17. *Situations Plan der Beuthener Vorstadt zu Gleiwitz. Nach der Sternitzkischen Karten vom Jahre 1853*, prepared by Kolley 1856, approx. length scale 1:1,000, approx. height scale 1:6,300, colour drawing 40 x 61 cm; AP Gliwice ZK 349.

18. *Charte der Stadt Gleiwitz*, prepared by Zeunert 1859/60 suppl. by Höbius 1861, original scale approx. 1:1,500, colour drawing 89 x 120 cm; AP Gliwice ZK 325.

19. *Übersichtsplan des für Neuanlage von Strassen in Aussicht genommenen Terrens der Stadt Gleiwitz*, Marcks-Balke 1876/77, original scale 1:2,500, colour drawing 113 x 183 cm; AP Gliwice ZK 354.

20. *Kreis Stadt Gleiwitz Gemarkung Gleiwitz nro 25. Gemarkungskarten in 24 Blättern. Blatt 5*, prepared by Steurath 1884, original scale 1:1,000, colour drawing 100 x 66 cm; Gliwice UGIK B 699.

21. *Plan der Stadt Gleiwitz unter Berücksichtigung der in Aussicht genommenen Nuananlagen von Strassen und Plätzen nach der Aufnahme und Kartierung von Marks und Balke in Berlin im Jahre 1876-1877*, prepared by Hieronymus, original scale 1:6,450, printed by Neumann Stadtbuchdruckerei Gleiwitz 1890, colour print 71 x 43 cm; AP Opole RO IX/14.

22. *Fluchtlinienplan für den Stadtteil zwischen Ostropka-Straße, Roßmarkt, Nikolai-Thurm-Oberwall- und Schröter-Straße und vom Platze um die Peter-Paul-Kirche*, prepared by Kranz, Schreiber 1902, original scale 1:500, colour drawing 98 x 65 cm; AP Gliwice ZK B 124.

23. *Bebauungsplan für den Stadtteil Trynek, Uebersichts-Plan*, prepared by Kranz, Schneider 1906, original scale 1:5,000, colour drawing on lithographic base 75 x 55 cm; AP Gliwice ZK Gt 7.

24. *Plan der Stadt Gleiwitz*, prepared by F. Schreiber, original scale 1:5,000, printed by Neumann Stadtbuchdruckerei 1906, colour print with manual supplements 78 x 108 cm; AP Gliwice ZK 330.

25. *Übersichts Plan der Stadt Gleiwitz nach dem Zustande im Jahre 1895*, Gliwice 1911, prepared by F. Schreiber and Horwath, published by Miejski Urząd Miernicy [Municipal Surveying Office], original and reproduction scale 1:10,000, colour print 70 x 82 cm; AP Gliwice ZK 326.

26. *Übersichts Plan der Stadt Gleiwitz nach dem Zustande im Jahre 1910*, Gliwice 1911, prepared by F. Schreiber, published by Miejski Urząd Miernicy [Municipal Surveying Office], original and reproduction scale 1:10,000, colour print 69 x 85 cm; AP Gliwice ZK 331.

27. *Fluchtlinienplan von der Dorfstrasse in Richtersdorf Kreis Gleiwitz*, 1912-1914, Seybold, Malik, original scale 1:1,000, colour print 98 x 73 cm; AP Gliwice ZK B 96.

28. *Stadt Gleiwitz Karte des Baugrundes und der geologischen Verhältnisse*, prepared by F. Schreiber 1921, original scale approx. 1:25,000 colour drawing 49 x 37 cm; AP Gliwice ZK Gz-11.

29. *Übersichts-Plan der Stadt Gleiwitz*, Berlin 1923, prepared by F. Schreiber, published by Miejski Urząd Miernicy [Municipal Surveying Office], original and reproduction scale 1:10,000, printed by Berliner Lithographisches Institut, colour print 69 x 85 cm; AP Gliwice ZK Gt 24b.

30. *Übersichtsplan der Stadt Gleiwitz – Sektion D*, 1934, published by Miejski Urząd Miernicy [Municipal Surveying Office], original and reproduction scale 1:5,000, printed by 112 x 72; AP Gliwice ZK G 26 D.

31. *Gliwice*, before 1951, drawn by Cebulka, original scale 1:15,000, print 73 x 62 cm; AP Gliwice ZK Gz 25.

32. *Gliwice*, orthophotomap, 2011, original scale 1:2,500.