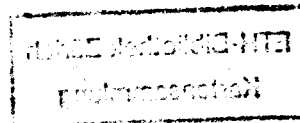


# LESOTHO ATLAS OF SUSTAINABLE DEVELOPMENT



D.M. Bohra

# CONTENTS

	PAGE
Foreword	iii
Introduction	vi
Executive Summary	xxi
List of Tables	xxxvii
Map No.	
<b>Maps on Lesotho in Africa</b>	
1. Lesotho in Africa	1
2. Human Development Index in Southern Africa: 2001	2
3. Lesotho: Constituencies: 1996 Census	3
4. Lesotho: Districts: 1996	4
5. Geographical Zones of Lesotho: 1996	5
6. Population Growth Rate: 1996	6
<b>Maps on Population Control Measures</b>	
7. Sources of Contraceptive Supplies: 1993 (Per Cent) and Women per 1000 Using Child Spacing Devices for the First time	7
8. Relative Per Cent of Contraceptives Used by Women and Reasons for Not Using Family Planning Aids	8
9. Non-arable land as Per Cent of Total Area: 1996	9
<b>Maps on Distribution and Density of Population</b>	
10. Population Density: 1996 Census (Data by Constituencies)	10
11. Density of Population: 1996 Census (Data by Districts)	11
12. Change in Density of Population: 1986-96 (Data by Districts)	12
13. Lorenz Curve for Measuring Population Concentration in Lesotho	13
14. Density of Population by Arable Land	14
<b>Maps on Livestock and Range Management</b>	
15. Livestock Percentages: 1995 (Data by Geographical Zones)	15
16. Participation of Population in Livestock Activities (Per Cent): 1997 (Data by Geographical Zones)	16
17. Male Shepherds by Area and Age: 1999	17
18. Percentage of Shepherds Experiencing Stock Theft	18
19. Important Features of Lesotho's Land Tenure System	19

20.	Major Agricultural Indicators (Per Cent)	20
21.	Participation of Population in Crop Production (Per Cent): 1997 (Data by Geographical Zones)	21
<b>Maps on Food Insecurity</b>		
22.	Percentage of Households Producing Less than the FAO Standards of 180 kg of Cereals Per Member Per Year	22
23.	Cereal Crop Self Sufficiency by Area (Per Cent): 1999	23
24.	Self Sufficiency Indices (Domestic Productivity/Total Supply) as a Percentage: 1983-84 to 1992-93	24
25.	Percentage (Estimated) of Household Possessions: 1999	25
26.	Percentage of Rural Households Possessing Fields and Livestock	26
<b>Maps on Rural Households Without Land</b>		
27.	Percentage of Rural Households Without Land: 1986	27
28.	Percentage of Rural Households Without Land: 1996 (Estimated)	28
<b>Maps on Household Characteristics</b>		
29.	Size of Household: 1996 Census	29
30.	Male and Female Headed Households by Age Group: 1996 Census	30
31.	Average Household Size by Type of Place of Residence and Households Distribution by Size and Type of Household: 1996 Census	31
32.	Family Size and Children Present by Gender and Age of Household Head	32
<b>Maps on Distribution of House Type and Ownership</b>		
33.	Types of Houses	33
34.	Distribution of House Types by Geographical Zones (Per Cent)	34
35.	Distribution of Households by Ownership of Houses (Data by Districts) (Per Cent)	35
36.	Distribution of Households by Ownership of Houses (Data by Geographical Zones (Per Cent)	36
37.	Distribution of Households by Type of Housing Unit and Ownership of Houses (Per Cent)	37
38.	Distribution of Household Heads by Age Group, and Ownership of Houses (Per Cent)	38
39.	Sex Ratio by 0-4 Age Group, Age Structure, and Population by Geographical Zones: 1996 Census	39

<b>Maps on Marital Status and Gender</b>		
40.	De Jure Population Aged 15 Years and Above by Marital Status and Sex: 1996 Census	40
41.	Population by Age Groups, Marital Status, and Gender (Per Cent): 1996 Census	41
42.	Urban Population by Age Groups, Marital Status, and Gender (Per Cent): 1996 Census	42
43.	Rural Population by Age Groups, Marital Status, and Gender (Per Cent): 1996 Census	43
<b>Maps on Sex and Age Structure</b>		
44.	Sex and Age Structure: 1996	44
45.	Sex and Age Structure: 1986/87	45
46.	Sex and Age Structure (Total Population): 1996 Census (Data by Districts)	46
47.	Sex and Age Structure (Rural Population): 1996 Census (Data by Districts)	47
48.	Sex and Age Structure (Towns): 1996 Census	48
<b>Maps on Sex Ratio</b>		
49.	Sex Ratio: 1986 (Data by Constituencies)	49
50.	Sex Ratio: Number of Males Per 100 Females (Data by Constituencies): 1996 Census	50
<b>Maps on Sex Ratio (Maseru Urban)</b>		
51.	Maseru Urban Area, Sex Ratio: Number of Males Per 100 Females: 1986 Census (Data by Enumeration Areas)	51
52.	Maseru Urban Area, Sex Ratio: Number of Males Per 100 Females: 1996 Census (Data by Enumeration Areas) (Constituency Number 23)	52
53.	Maseru Urban Area, Sex Ratio: Number of Males Per 100 Females: 1996 Census (Data by Enumeration Areas) (Constituency Number 25)	53
<b>Maps on Excess of Males and Females</b>		
54.	Excess of Males and Females: 1986 (Data by Constituencies)	54
55.	Excess of Males and Females: 1996 (Data by Constituencies)	55
<b>Maps on Excess of Males and Females</b>		
56.	Maseru Urban Area, Excess of Males and Females: 1986 Census (Data by Enumeration Areas)	56
57.	Maseru Urban Area, Excess of Males and Females: 1986 Census (Data by Enumeration Areas) : (Constituency Number 23)	57

58.	Maseru Urban Area, Excess of Males and Females: 1986 Census (Data by Enumeration Areas) : (Constituency Number 25)	58
-----	--	----

### **Maps on Urbanization**

59.	Growth Rate of Urban Centers: 1986-96	59
60.	Urban Population as a Percentage of Total Population of the District: 1996 Census	60
61.	Urban Centers of Lesotho: 1996 Census	61

### **Maps on Migration**

62.	Percentage of Lesotho Citizens Enumerated and Born in the same District: 1996 Census	62
63.	Percentage of Lesotho Citizens Enumerated in the District but Born outside the District: 1996 Census	63
64.	Lesotho Citizens Inside Lesotho by District; and Lifetime Migration Streams: 1996 Census	64
65.	Population Inside Lesotho by Place of Residence in 1986, and Place of Enumeration in 1996	65
66.	In-migration Rate Per 1000 by District: 1986-96	66
67.	Out-migration Rate Per 1000 by District: 1986-96	67
68.	Population Who Moved (1986-96) by Sex of All Ages	68
69.	Percentage of Absent Population by District; Residential Status (Rural) and Sex: 1996 Census	69
70.	Percentage of Absent Population by District; Residential Status (Urban) and Sex: 1996 Census	70
71.	Sex and Age Structure of Absentees from Lesotho: 1996 Census	71
72.	Lesotho Citizens in South Africa by District of Birth: 1996 Census	72
73.	Number Recruited (A) and Average Number in Employment (B)	73

### **Maps on Economic Outlook**

74.	Savings and Investment (in Per Cent of GNP)	74
75.	GDP and GNP: Composition and Growth	75
76.	Workers' Remittances and Basotho Miners in South Africa	76

### **Maps on Employment Status**

77.	Employment Status by Region and Gender of Households	77
78.	Population 10+ Years and Currently Employed Population by Sex and District of Enumeration: 1996 Census	78
79.	Occupation by Sex and Year (Per Cent)	79

80.	The Informal Sector	80
81.	Economic Impact of the Political Unrest of September 1998	81
82.	Unemployment Rates (Per Cent) (Data by Districts) Labor Force Survey: 1997	82
83.	Main Source of Income by Region and Gender	83
84.	Household Income Distribution and Lorenz Curve (Data by Geographical Zones): 1997	84
85.	Annual Change Rates of GDP and GNI (GNP) During 1990: 1999	85
86.	Trend of Exports (in Million Maloti)	86
87.	Basic Characteristics of Lesotho's Small Scale Enterprises (SSEs): 1990	87
<b>Maps on Energy</b>		
88.	Percentage Distribution of Households by District and Principal Source of Cooking Fuel: 1996 Census	88
89.	Percentage Distribution of Households by District and Principal Source of Lighting: 1996 Census	89
90.	Fuel Use (Data by Geographical Zones)	90
91.	Percentage of Fuel Use in 1993 and 1999 (Data by Geographical Zones, Maseru, and Lesotho)	91
92.	Environmental Security Indicators	92
<b>Maps on Gender Issues in Lesotho</b>		
93.	Gender-related Development Index (GDI) and Human Development Index in Southern Africa: 2001	93
94.	Gender Empowerment Measure (GEM) in Southern Africa: 1998	94
<b>Maps on Female Headed Households</b>		
95.	Percentage Distribution of Household Heads by Age and Sex: 1996	95
96.	Poverty Index by Gender of Household Head	96
97.	Telecommunications and Postal Services: Salient Features	97
98.	Salient Features of Rural Electrification	98
<b>Maps on Radio Listenership, Television Viewership, and Newspaper Magazine Readership</b>		
99.	Percentage of Households by Ownership of Radio (Data by Districts)	99
100.	Percentage of Households by Type of Housing Unit, and Ownership of Radio	100
101.	Percentage of Households by Ownership of Television (Data by Districts)	101

102.	Percentage of Population Who do not read Newspapers (Data by Districts)	102
103.	Kilometers of Roads Per 1000 Persons (Data by Districts)	103
104.	Kilometers of Roads Per 1000 Sq.Km. of Area (Data by Districts)	104
105.	Rates of Bed Occupancy (Per Cent): 1998	105
106.	Distribution of Woodlots by Districts: 1993-94 (Hectares)	106
107.	Biological Diversity in Lesotho	107
108.	GHG Emissions by Type and Sector, 1994	108
<b>Maps on Patterns of Poverty</b>		
109.	Patterns of Poverty	109
110.	Poverty Indicators	110
111.	Incidence, Depth and Severity of Poverty (Data by Districts)	111
112.	Incidence, Depth and Severity of Poverty (Data by Geographical Zones)	112
113.	Incidence and Characteristics of Urban Poverty: Priority Items of Household Expenditure (Per Cent)	113
114.	Emergency Programs: Drought Relief: Drought Relief Implementation Group (DRIG): An Evaluation Coverage of Vulnerable Household Feeding Program by District (Per Cent)	114
115.	Equality in Allocation of Disaster and Drought Relief	115
116.	The Implementation of Food Aid Programs For Vulnerable Populations in Lesotho (Beneficiaries as a Per Cent of District Populations): 1995-96	116
<b>Maps on Level of Education by Regions</b>		
117.	Level of Education by Regions (Per Cent)	117
118.	Educational Attainment of Population >15 Years by Location	118
119.	School Enrolments of Children Aged 6-17 Years by Gender	119
120.	Rate of Literacy (Per Cent): 1997	120
<b>Maps on Primary and Secondary Education</b>		
121.	Number of Primary Schools Per 10000 Population: 1996	121
122.	Number of Secondary Schools for 10000 Population: 1996	122
123.	Net Intake Rate (NIR) by District and Gender: 1997	123
<b>Maps on Net Enrolment in Primary School</b>		
124.	Net Enrolment in Primary School: Males Aged 6-12 Years	124
125.	Net Enrolment in Primary School: Females Aged 6-12 Years	125

126.	Secondary School Enrolment Rate (13-17 Years) by Gender and District: 1996	126
127.	Evolution of Pupil: Teacher Ratio: 1990; 1997	127
<b>Maps on Educational Structure of Lesotho</b>		
128.	Education Pyramid and Per Cent of Children Aged 6-15 in School	128
129.	Percentage of Boy and Girl Students: 1999	129
<b>Maps on Educational Infrastructure</b>		
130.	Educational Infrastructure Indicators: 1997	130
131.	Percentages of Education Infrastructure Indicators: 1989; 1992 and 1997	131
<b>Maps on Education Practice and Education Effect: 1997; 1999</b>		
132.	Percentage of Education Practice Indicators: 1997	132
133.	Percentage of Education Effect Indicators: 1997; 1999	133
<b>Maps on Repetition Rates by Gender</b>		
134.	Average Pupil Flow Rates (Promotion, Repetition, and Drop-out Rates), 1996-97	134
135.	Repetition Rates by District and Gender: 1997	135
136.	Parents' Fees and Government Subsidies Per Child by Income Group (Per Cent)	136
<b>Maps on Water Resources and Water use</b>		
137.	Static Water Resources (Million m <sup>3</sup> )	137
138.	Renewable Water Resources (Million m <sup>3</sup> /Year)	138
139.	Renewable Water Resources (Utilized) (In Per Cent)	139
140.	Lesotho Highlands Water Project (LHWP)	140
<b>Maps on Drinking Water Supply</b>		
141.	Percentage Distribution of Households by District and Principal Source of Drinking Water	141
142.	Percentage Distribution of Households by Principal Source of Drinking Water, and by Type of Housing Unit	142
143.	Percentage Distribution of Households by Main Source of Drinking Water and Sanitation Facility	143
144.	Percentage of Rural Population to Total Rural Population Covered by Water Supply (Data by Districts)	144
145.	Per Cent of Rural Water Systems Rationed by Districts: 1995	145



146.	Percentage of Urban Population to Total Urban Population Covered by Water Supply (Data by Urban Areas)	146
147.	Households with Access to Safe Water Supply (Data by Districts) (Percentage)	147
148.	Percentage of Peri-Urban Residents Drawing Water from Various Distances and Who Collects Water	148

### **Maps on Sanitation Facility**

149	Sanitation Facility: Households with a Latrine (Percentage) (Data by Districts)	149
150.	Sanitation Facility: Percentage of Population Having Access to Latrine (Data by Geographical Zones; Rural and Urban Lesotho)	150
151.	Percentage Distribution of Households by District and Main Toilet Facility: 1996 Census	151
152.	Percentage Distribution of Households by Main Type of Housing Units and Sanitation Facility	152
153.	Refuse Generation Rate in Kilograms Per Capita Per Day for Towns of Lesotho	153

### **Maps on Infant and Child Mortality Rates**

154.	Infant Mortality Rate (IMR) and Child Mortality Rate (CMR) Per 1000 Live Births (Data by Geographical Zones)	154
155.	Infant Mortality Rate (IMR) and Child Mortality Rate (CMR) Per 1000 Live Births (Data by Districts)	155
156.	Infant and Child Mortality Rate: With and Without AIDS: 1996; 2010	156
157.	Reproductive Health	157

### **Maps on Immunization Coverage**

158.	Immunization Coverage: Children Who Received All Doses of All Antigens (Data by Districts)	158
159.	Immunization Coverage: Children Who Received All Antigens at the Correct Time (Data by Districts)	159
160.	Immunization Coverage: Invalid Vaccinations (Data by Districts)	160
161.	Percentage of Mothers Who could Identify the Symptoms of Acute Respiratory Infections (ARI) (Data by Districts)	161

### **Maps on Malnutrition**

162.	Levels of Moderate Malnutrition (Percentage) (Data by Districts)	162
163.	Levels of Severe Malnutrition (Percentage) (Data by Districts)	163
164.	Percentage of Children Below Normal Height and Weight: 1993; 1999	164

165.	Exclusive Breast-Feeding Rates (Data by Districts)	165
<b>Maps on Vitamin A Deficiency</b>		
166.	Percentage of Children Fed With Vitamin A Rich Food (Data by Districts)	166
167.	Percentage of Caretakers Who had heard Health Messages on Vitamin A (Data by Districts)	167
<b>Maps on Diarrhoeal Diseases</b>		
168.	Percentage of Children Suffering from Diarrhoea (Data by Districts)	168
169.	Percentage of ORT Use in Diarrhoea (Data by Districts)	169
170.	Age Distribution of 802 Cases of Diarrhoea, Mophale's Hoek District, Lesotho	170
<b>Maps on Iodine Deficiency Disorder</b>		
171.	Households Using Iodized Salt (Percentage) (Data by Districts)	171
172.	Prevalence of Goitre in Pupils (Percentage) (Data by Districts)	172
<b>Maps on Tuberculosis</b>		
173.	Rates of Tuberculosis Per 100000 Population (Annual)	173
174.	Percentage of Treatment Success of TB Cases (Data by Health Service Areas)	174
<b>Maps on Life Expectancy at Birth</b>		
175.	Expectation of Life at Birth By Sex for 1996 (Without the Impact of AIDS (Data by Districts) (Estimated)	175
176.	Expectation of Life at Birth By Sex for 2026 (Without the Impact of AIDS (Data by Districts) (Estimated)	176
<b>Maps on Access to Health Services</b>		
177.	Households by Distance to Health Center: Rural, Urban, Lesotho (Percentage)	177
178.	Access to Health Services (Data by Geographical Zones)	178
179.	Share of Population and Health Expenditure: Cost Recovery Among Districts	179
180.	Adolescent's Health	180
181.	Salient Features of HIV/AIDS in Lesotho: New AIDS Cases in Lesotho by District (1999) (Confirmed Cases)	181
182.	Human Development Index With and Without AIDS: 1996 and 2010	182
183.	Demographic and Human Development Effects of HIV/AIDS: 1996; 2010	183

### **Maps on Economic Security in Relation to Access to Resources**

184.	Level of Participation in Development Decisions (Per Cent)	184
185.	Economic, Employment, and Education Status Related to Level of Participation in Development Decisions (Per Cent)	185
186.	Equality of Allocation of Government Employment (Per Cent)	186
187.	Economic, Employment and Education Status in Relation to Equality of Treatment in the Allocation of Government Employment (Per Cent)	187
188.	Equality of Treatment in the Allocation of Scholarships in Relation to Economic, Employment and Educational Status (Per Cent)	188
189.	Success Rate in Accessing Credit by Region and Sex (Per Cent)	189
190.	Main Sources of Credit (Per Cent)	190
191.	Main Reasons for Denial of Credit (Per Cent)	191
192.	Percentage of Households with No Bank Account, 1990, 1993, 1999	192

### **Maps on Personal, Community, and Political Security**

193.	Equality Before the Law (Per Cent)	193
194.	Economic, Employment and Educational Status in Relation to Perceptions of Equality Before the Law (Per Cent)	194
195.	Freedom to Express Political Opinions (Per Cent)	195
196.	Effects of Parliamentarians, the Police and the Army on Freedom of Expression (Per Cent)	196
197.	Perceptions of Freedom to Express Political Views by Economic, Employment and Educational Status (Per Cent)	197
198.	Effects of Parliamentarians, the Police, and the Army on Freedom of Expression by Economic, Employment and Educational Status (Per Cent)	198

### **Maps on Investing in Human Resources**

199.	Recurrent Expenditure; Major Functions of Government	199
200.	Households with Type of Sanitation Facility (Per Cent)	200
201.	Percentages of Households with Low Spending on Major Expenditures, Clothing, Health and Education: 1993 and 1999	201
202.	Government Budgetary Operations by Functional Classification in Constant 1995 Prices (Percentages)	202
203.	Health Service Area Map of Lesotho	203

## **Maps on National and Regional Human Development Indices (HDIS)**

204.	National and Regional Human Development Indices (HDIS)	204
205.	National and Regional Human Development Indices (HDIS) Based on Literacy in Sesotho	205
206.	National and Regional Human Development Indices (HDIS) Based on Literacy in English	206
207.	Human Rights Practices: Salient Features	207
208.	Awareness of Governance and Legal Issues and Social/Community Integration	208
209.	Situation of Women	209
210.	Violence Against Women	210
211.	Persons Received, Convicted, on Remand and Discharged by Prison, 1999	211

## **Maps on Child Labor**

212.	Occupation of Boys Between 5-16 According to the Household Income, in Per Cent	212
213.	Occupation of Girls Between 5-16 According to the Household Income, in Per Cent	213

## **Analytical Text of Maps**

## **Tables**

## **References**