 NATIONAL GEOGRAPHIC

---

SATELLITE ATLAS  
OF THE WORLD

Washington, D.C.

 NATIONAL GEOGRAPHIC

## SATELLITE ATLAS OF THE WORLD

Published by THE NATIONAL GEOGRAPHIC SOCIETY  
JOHN M. FAHEY, JR. *President and Chief Executive Officer*  
GILBERT M. GROSVENOR *Chairman of the Board*  
NINA D. HOFFMAN *Senior Vice President*

Prepared by THE BOOK DIVISION and NATIONAL GEOGRAPHIC MAPS

### THE BOOK DIVISION

WILLIAM R. GRAY *Vice President and Director*  
CHARLES KOGOD *Assistant Director*  
BARBARA A. PAYNE *Editorial Director and Managing Editor*  
DAVID GRIFFIN *Design Director*

### BOOK DIVISION STAFF FOR THIS BOOK

CARL MEHLER *Project Editor and Director of Maps*

CAROLINDA E. HILL *Text Editor*

### STUDIO A *Design*

LESLIE ALLEN, ELISABETH BOOZ, PATRICK BOOZ,  
JOHN E. ESTES, KIM HEACOX, K. M. KOSTYAL, ROBIN T. REID *Writers*

ANTONIO J. BUSALACCHI, JR., RALPH FERRARO,  
CARL HAUB, CAROLINDA E. HILL, THOMAS R. LOVELAND,

CARL MEHLER, PEYTON H. MOSS, JR., JOHN T. NEER,

WALTER H. F. SMITH *Contributing Writers*

MARTHA C. CHRISTIAN *Contributing Editor*

KIMBERLY A. KOSTYAL *Senior Researcher*

KAREN D. KLINE, KEITH R. MOORE, ROBIN T. REID *Researchers*

THOMAS L. GRAY *Map Editor*

JOSEPH F. OCHLAK, SCOTT ZILLMER *Map Researchers*

JEHAN AZIZ *Map Production Manager*

JOHN S. BALLAY, JAMES HUCKENPAHLER, MAPPING SPECIALISTS, LTD.,

BETH N. WEISENBORN, SCOTT ZILLMER *Map Production*

STUART ARMSTRONG *Illustrator*

R. GARY COLBERT *Production Director*

CLAYTON BURNESTON *Senior Image Technician*

GEORGE BOUNELIS, STEPHEN T. GOLDMAN *Image Technicians*

PEGGY CANDORE *Staff Assistant*

### NATIONAL GEOGRAPHIC MAPS

ALLEN CARROLL *Managing Director*

DANIEL J. ORTIZ *Director of Map Ventures*

DIERDRE BEVINGTON-ATTARDI *Project Manager*

LISA R. RITTER *Senior Remote Sensing Researcher-Editor*

SUSAN A. CARNEY, KARLA TUCKER *Researchers*

ERIC A. LINDSTROM, DAVID B. MILLER, GUS PLATIS *Map Editors*

A. RUSSELL LITTLE, KEN A. MARLOW, *GIS Analysts*

SEAN MOHN, STEPHEN P. WELLS *Map Production*

MICHAEL J. HORNER *Map Librarian*

PATRICIA A. HEALY *Staff Assistant*

### MANUFACTURING AND QUALITY CONTROL

GEORGE V. WHITE *Director*

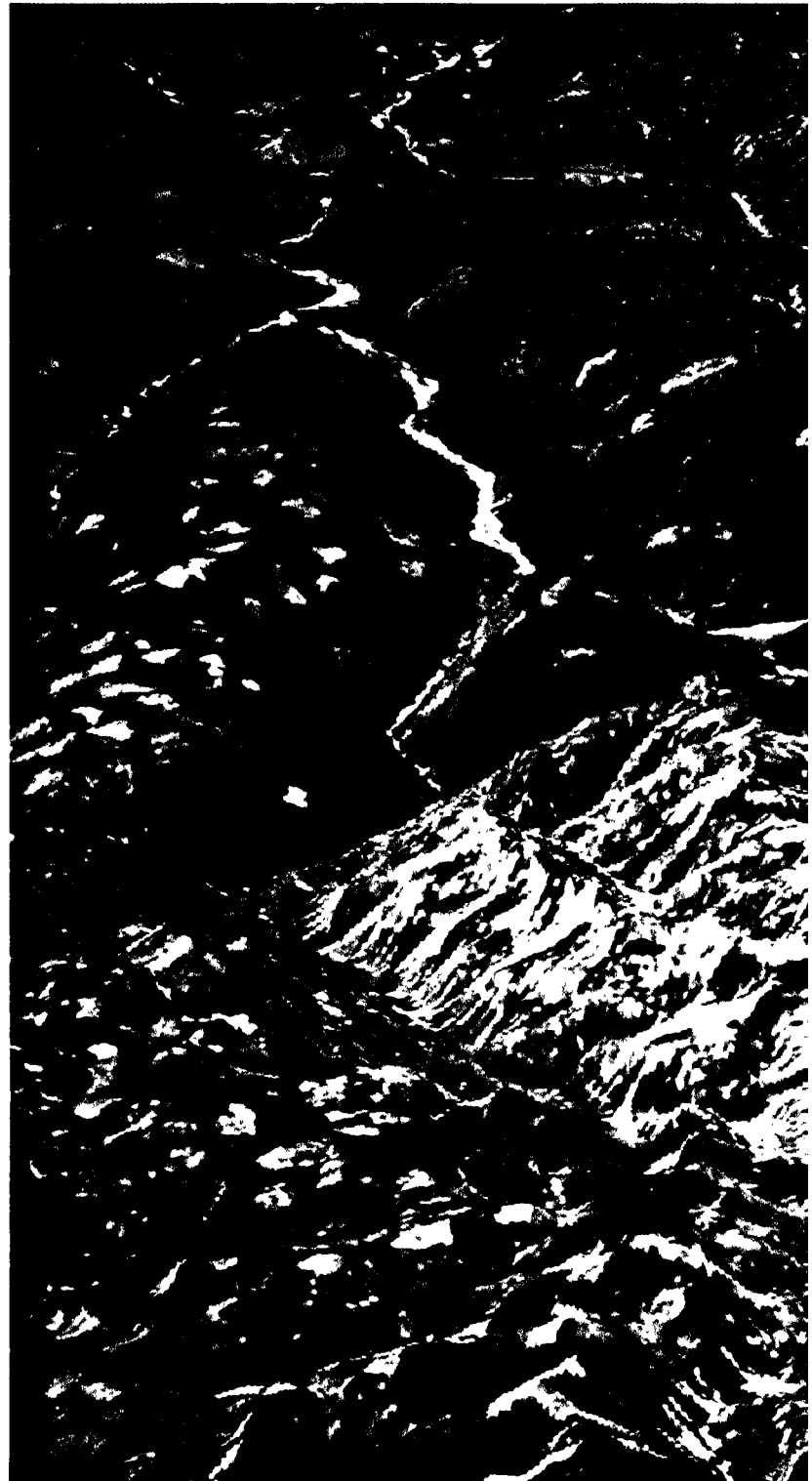
JOHN T. DUNN *Associate Director*

CLIFTON BROWN *Manager*

MARK A. WENTLING *Indexer*

Copyright © 1998 National Geographic Society.

All Rights Reserved. Reproduction of the whole or any part of the contents without written permission is prohibited. Library of Congress CIP Data: page 221

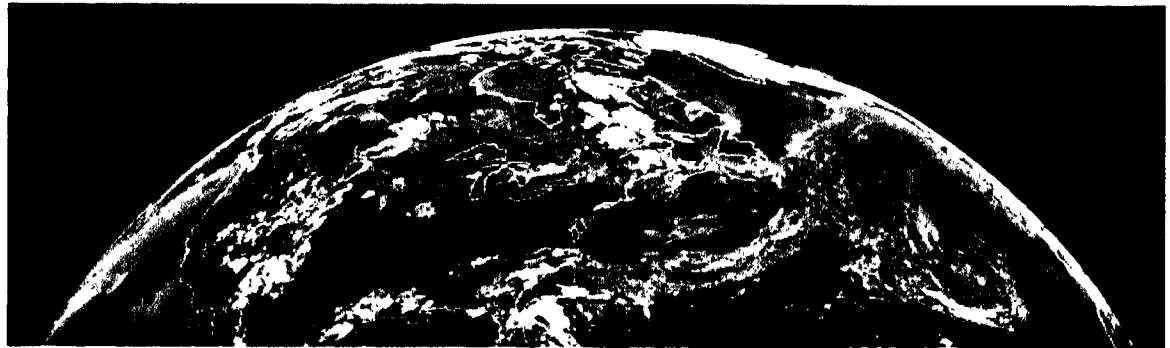


Previous Pages: EASTERN MEDITERRANEAN

# TABLE OF CONTENTS

- 8 *Introduction*
- 10 *History of Satellites*
- 12 *How Satellites Work*

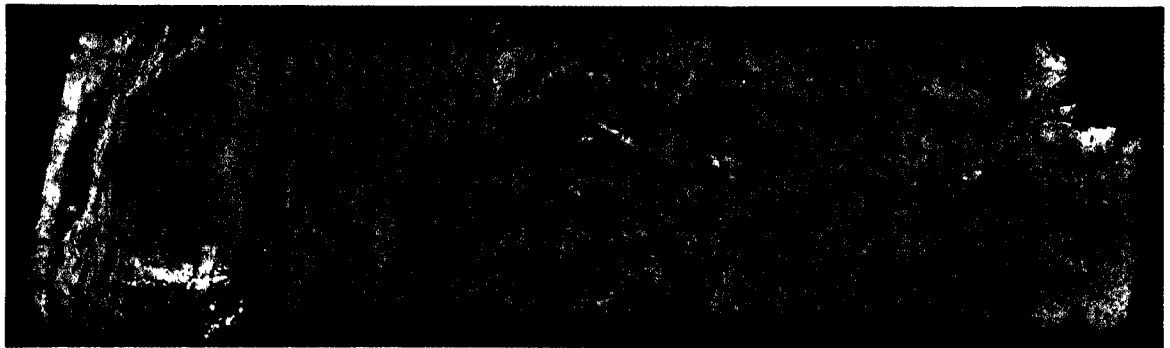
## 16 WORLD



## 40 NORTH AMERICA



## 72 SOUTH AMERICA



## 98 EUROPE





126 ASIA



154 AFRICA



180 AUSTRALIA  
AND NEW ZEALAND



198 ANTARCTICA

210 *The Future*  
212 *Space Agencies  
and Contributors*  
214 *Abbreviations  
and Imagery Credits*  
217 *Index*  
222 *Acknowledgments*